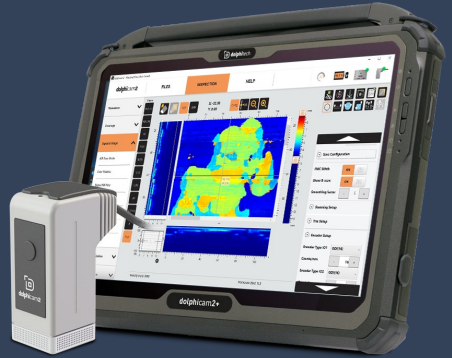


SERVICE AND SUPPORT SOLUTIONS

Dolphitech provides a range of comprehensive service solutions throughout the equipment's entire life cycle. This helps increase the reliability and repeatability of the measurements for uninterrupted operations.



SERVICE AGREEMENTS

Tailored service agreement packages.



TRAINING & APPLICATION SUPPORT

Product familiarisation and advanced on-site application-based training.



CALIBRATIONS

Versatile remote calibration services.



SYSTEM HEALTH CHECK

Remote health check.



TRANSDUCER MODULE PROGRAM

Repair, upgrade and exchange services.



SAMPLE NDT TESTING

Feasibility studies.





TECHNICAL SERVICE AND SUPPORT

Assure uninterrupted operation through responsive service support.

SERVICE AGREEMENT PACKAGES

Complete range of service maintenance programs and repair solutions to help optimize operational uptime.

TRAINING & APPLICATION SUPPORT

As per application requirements, specifically developed online and on-site training programs are available for dolphicam2, covering the entire functionality and the inspection analysis tools.

SYSTEM HEALTH CHECK

Remote system health checks are carried out for TRMs, USB-C cables, and the Black-Box to help identify any performance discrepancies compared to the original manufacturing status.

CALIBRATION

Annual calibration services are carried out remotely, typically, a maximum of 2 days are required for the certificates to be issued.

REPAIR, UPGRADE AND EXCHANGE SERVICES

Fixed-price repair with upgrade and exchange solutions are available for all TRMs with a 12-month limited warranty.

FEASIBILITY STUDIES

Feasibility studies can be carried out upon request to evaluate composites, metals, and other exotic materials.



FOR MORE INFORMATION VISIT [DOLPHITECH.COM](https://www.dolphitech.com)
OR EMAIL US AT [SUPPORT@DOLPHITECH.COM](mailto:support@dolphitech.com).



dolphitech