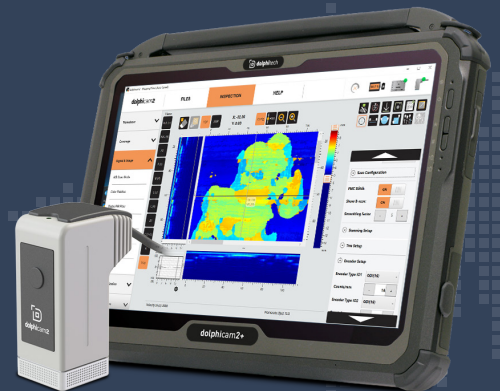


SERVICE AND SUPPORT SOLUTIONS



Dolphitech provide a comprehensive range of service and support solutions including service programs, preventative maintenance and repairs, genuine replacement parts, training, calibrations, system health checks, transducer programs and even sample NDT testing.

Dolphitech non destructive testing equipment can maximise uptime, and maintain the flow of efficient operations to enhance overall productivity in even the most demanding applications with our proactive service and support solutions.



SERVICE MAINTENANCE

Comprehensive range of service maintenance programs and repair solutions to ensure maximum uptime.



CALIBRATIONS

A range of annual online calibrations are available to ensure the optimum performance of your dolphitech equipment.



SYSTEM HEALTH CHECK

System health checks are conducted online and ensure the routine checking of all dolphitech systems and components to ensure the optimal operation of equipment.



TRAINING & APPLICATION SUPPORT

Dolphitech provides training programs customisable to your needs, from familiarisation to advanced on-site user and application training.



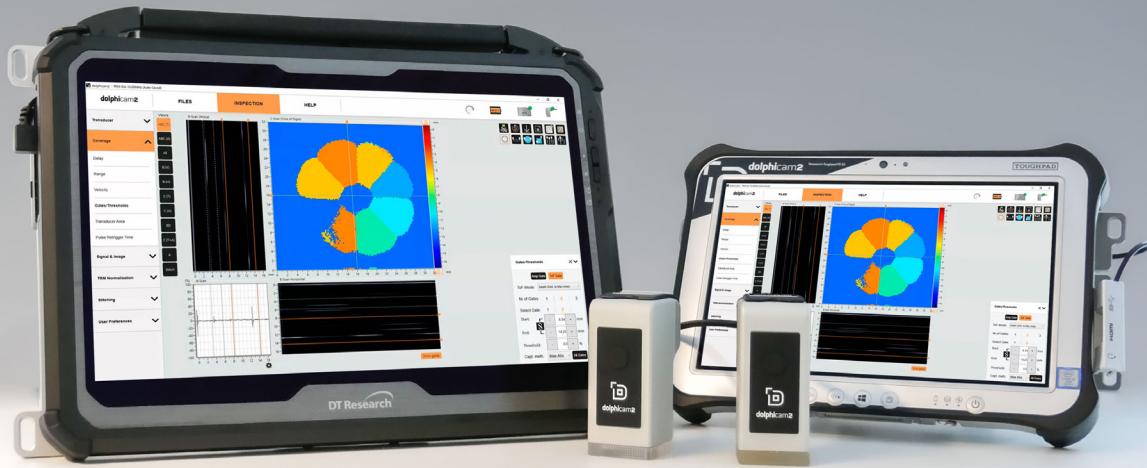
SAMPLE NDT TESTING

Dolphitech provides advanced sample testing for customers all over the world. We are NDT experts in a wide range of substrates such as composites, metals, bonded structures and coatings.



TRANSDUCER MODULE PROGRAM

The dolphitech Transducer Module Program offers upgrade, exchange and repair options for your TRMs.



SERVICE MAINTENANCE

- Comprehensive Support**
 Dolphitech ensures uninterrupted operations through responsive service support, readily available spare parts, and rapid repairs. Duplicate products are provided during equipment maintenance.

CALIBRATIONS

- Efficient Remote Calibration**
 Annual calibrations and online services for transducers are offered remotely, providing certificates within 2 working days without the need for equipment returns.

SYSTEM HEALTH CHECKS

- Optimized Performance**
 Online System Health Checks focus on transducer modules, USB-C cables, and the dolphitech black-box. Identify bottlenecks, reduce downtime, and enhance productivity with tailored recommendations.

TRAINING & APPLICATION SUPPORT

- Professional Training**
 Online training programs ensure optimal dolphicam2 use, covering instrument adjustments, result processing, and informed decision-making. On-site application support offers advanced expertise tailored to specific needs.

SAMPLE NDT TESTING

- Global Expertise**
 Dolphitech provides advanced sample testing globally for composites, metals, and exotic materials. Testing options include dolphitech offices or on-site visits, addressing material sensitivities and security vetting requirements.

TRANSDUCER MODULE PROGRAM

- TRM Solutions**
 Dolphitech offers fixed-cost repair services for TRMs, comprehensive upgrades adapting to technological advancements, and streamlined exchange options, all with a 12-month warranty. Calibration and health check validity remains unchanged.

Dolphitech's comprehensive range of service and support solutions cover service maintenance, calibration, health checks, training, sample testing, and transducer support. Our emphasis on responsiveness underscores dolphitech's commitment to facilitating seamless operations worldwide.