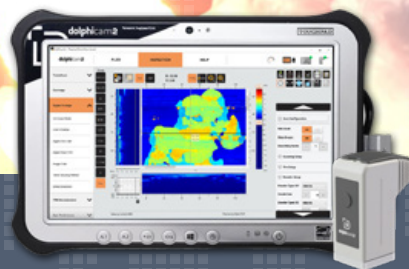




dolphitech



SEE EVERYTHING TODAY FOR A SAFER TOMORROW

Dolphitech is a pioneer in space technology,
providing accuracy and quality of inspection

dolphitech.com/markets/space



Dolphicam2 is the premium non-destructive testing solution for the space industry. Our equipment is supporting some of the most exciting space projects seen this century, and dolphicam2 is helping assure the integrity, viability and investment of some of the world's most complex, and expensive commercial projects.

Our flagship product the dolphicam2 is straightforward, quick to deploy and user-friendly system, enabling technicians of all experience levels to generate analysis-ready images of materials in real time for quick decision making.

Composite Inspection

Dolphicam2's Matrix Array is specialized to excel within composite material applications. From manufacturing to in-service, the dolphicam2 has been used to inspect solid laminates, sandwich and bonded structures on some of the most exciting space programs in place today!

Common Applications

- Delamination's
- Bridging
- Voids
- Porosity
- Repair Plies
- Impact Damage
- Foreign Object Damage
- Sandwich Structures
- Bonded Structures

Our standalone software allows inspections to be conducted by less experienced technicians, data can then be analyzed remotely anywhere in the world.



Fast

Ready to use in 60 seconds



Accurate

Full matrix capture from 16,384 elements



Easy to use

Auto TRM detection and Intuitive menu navigation



Portable

Lightweight, small and rugged



Supported

Expert technical support and training

Why dolphitech



EXPERTS IN OUR FIELD

Dolphicam2 is the culmination of over 10 years of dedicated R&D and field experience.



UNIQUE APPROACH TO ULTRASONIC TESTING (UT)

Dolphicam2 is the next generation of ultrasonic imaging and data capture, changing the face of critical NDT inspections.



TOTAL FOCUS ON CLIENT CHALLENGES

We push the boundaries on development and build the capabilities of our platform to meet challenges our customers face.



SUPPORTING YOUR TEAM, GROWING YOUR EXPERTISE

We provide the right tools, training and resources for you and your team to enhance your capabilities with our UT platform.