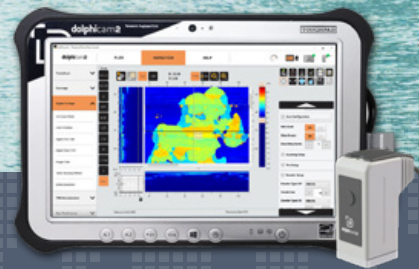




dolphitech



VESSEL SAFETY, PERFORMANCE, AND EFFICIENCY

The dolphicam2 provides unrivalled inspection capability for hulls, keels, masts, piping and decking

dolphitech.com/markets/marine



Dolphicam2 is the premium non-destructive testing solution for the marine industry. Whether it's inspection on the water or manufacturing quality control, our platforms provide reliability and accuracy that is unrivalled.

Our flagship product the dolphicam2 is straightforward, quick to deploy and user-friendly system, enabling technicians of all experience levels to generate analysis-ready images of materials in real time for quick decision making.

Integrity of your assets

Dolphicam2 can inspect a wide range of metals, composites and multi-materials. It's light and portable enough to be used on hard-to-reach areas requiring assessment and capable of performing reliably and accurately in even the harshest of conditions.

Common Applications

- Impact Damage
- Corrosion Mapping
- Water Ingress
- GFRP
- CFRP
- Porosity
- Void Identification
- Coating Integrity

Our standalone software allows inspections to be conducted by less experienced technicians, data can then be analyzed remotely anywhere in the world.



Fast

Ready to use in 60 seconds



Accurate

Full matrix capture from 16,384 elements



Easy to use

Auto TRM detection and Intuitive menu navigation



Portable

Lightweight, small and rugged



Supported

Expert technical support and training

Why dolphitech



EXPERTS IN OUR FIELD

Dolphicam2 is the culmination of over 10 years of dedicated R&D and field experience.



UNIQUE APPROACH TO ULTRASONIC TESTING (UT)

Dolphicam2 is the next generation of ultrasonic imaging and data capture, changing the face of critical NDT inspections.



TOTAL FOCUS ON CLIENT CHALLENGES

We push the boundaries on development and build the capabilities of our platform to meet challenges our customers face.



SUPPORTING YOUR TEAM, GROWING YOUR EXPERTISE

We provide the right tools, training and resources for you and your team to enhance your capabilities with our UT platform.